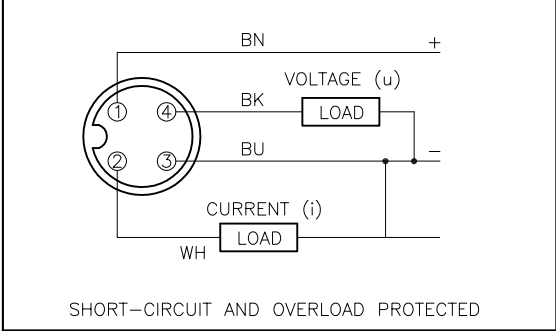
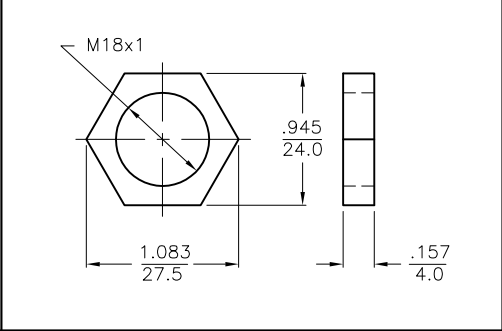


WIRING DIAGRAM

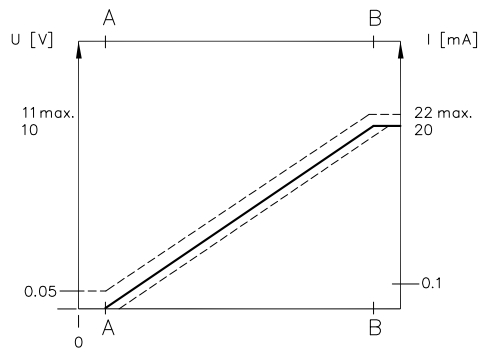
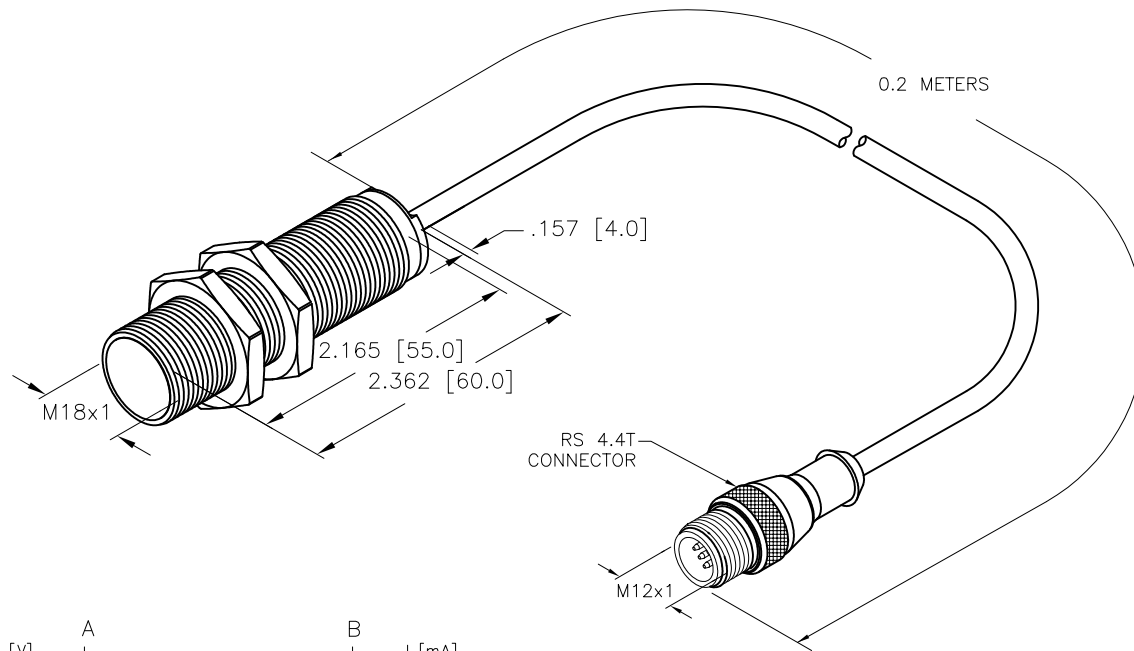


LOCKNUT LN-M18


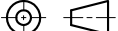


SPECIFICATIONS	
----------------	--

MEASURING RANGE [A...B]	15 mm
MOUNTING MODE	FLUSH
MIN. REPEAT ACCURACY	≤ 1.0% of Measuring Range [A-B] ≤ 0.5%, After a Warm-Up time of 0.5 h
REPRODUCIBILITY	≤ 40 μm ≤ 20 μm, After a Warm-Up time of 0.5 h
LINEAR DEVIATION	≤ 3.0% OF FULL SCALE
MAX. RELATIVE TEMPERATURE DRIFT	≤ ± 0.06%/K
OPERATING TEMPERATURE	-25°C to +70°C (-13°F to +158°F)
OPERATING VOLTAGE	15-30 VDC
RESIDUAL RIPPLE	≤ 10%
NO-LOAD CURRENT	≤ 8 mA
RATED INSULATION VOLTAGE	≤ 0.5 kV
SHORT-CIRCUIT PROTECTED	YES
WIRE-BREAK PROTECTION	INCORPORATED
REVERSE POLARITY PROTECTION	INCORPORATED
OUTPUT FUNCTION	4-WIRE, ANALOG OUTPUT
VOLTAGE OUTPUT	0-10 V
CURRENT OUTPUT	0-20 mA
LOAD RESISTANCE VOLTAGE OUTPUT	≥ 4.7 kΩ
LOAD RESISTANCE CURRENT OUTPUT	≤ 0.4 kΩ
MEASURING SEQUENCE FREQUENCY	100 Hz
OUTPUT RECOVERY TIME	≤ 12 ms
SENSOR HOUSING MATERIAL/PLATING	BRASS/CHROME
SENSOR ACTIVE FACE MATERIAL	PLASTIC, PA12-GF30
SENSOR END CAP MATERIAL	PLASTIC, EPTR
CABLE	Ø5.2, PVC
VIBRATION RESISTANCE	55 Hz (IN ALL 3 PLANES)
SHOCK RESISTANCE	30 g, 11 ms
DEGREE OF PROTECTION	IP 67



SOURCE DRAWING - FOR REFERENCE ONLY

RELATED DOCUMENTS		3RD ANGLE PROJECTION		THIS DRAWING IS CONFIDENTIAL AND THE PROPERTY OF TURCK INC. USE OF THIS DOCUMENT WITHOUT WRITTEN PERMISSION IS PROHIBITED.		 <div>3000 CAMPUS DRIVE MINNEAPOLIS, MN 55441 1-800-544-7769 (763) 553-7300 (763) 553-0708 fax www.turck.us</div>					
1. 2. 3. 4.				DRFT *CK		DATE 10/27/10		DESCRIPTION BI8-M18-LIU-0.2M-RS4.4T			
MATERIAL SEE NOTES		ALL DIMENSIONS DISPLAYED ON THIS DRAWING ARE FOR REFERENCE ONLY CONTACT TURCK FOR MORE INFORMATION		APVD		SCALE 1=1.3					
FINISH SEE NOTES				UNIT OF MEASUREMENT INCH [MILLIMETER] DO NOT SCALE THIS DRAWING				IDENTIFICATION NO. 1535596		REV B	
								FILE: 1535596		SHEET 1 OF 1	

B	UPDATE ID NUMBER PER HARMONIZATION PROJECT	CBM	11/06/17	
REV	DESCRIPTION	BY	DATE	ECO NO.